



广州市现代快速公交
和可持续交通研究所

Institute for Transportation
& Development Policy

Duan Xiaomei and Karl Fjellstrom, ITDP
ITDP-China, www.itdp-china.org
Hong Kong, 19 February 2013

Asia Society & ULI: “Tomorrow’s Cities Today”

BRT as a mass transit option

Parking, Greenways, Bike Sharing





广州市现代快速公交
和可持续交通研究所

Institute for Transportation
& Development Policy



**BRT as a mass transit
option**



**Parking maximums
instead of minimums**



**Greenways & bike
sharing**

The economics of mass transit

BRT: \$1-10 million/km



Metros: \$50-220 m / km



Planning and construction time

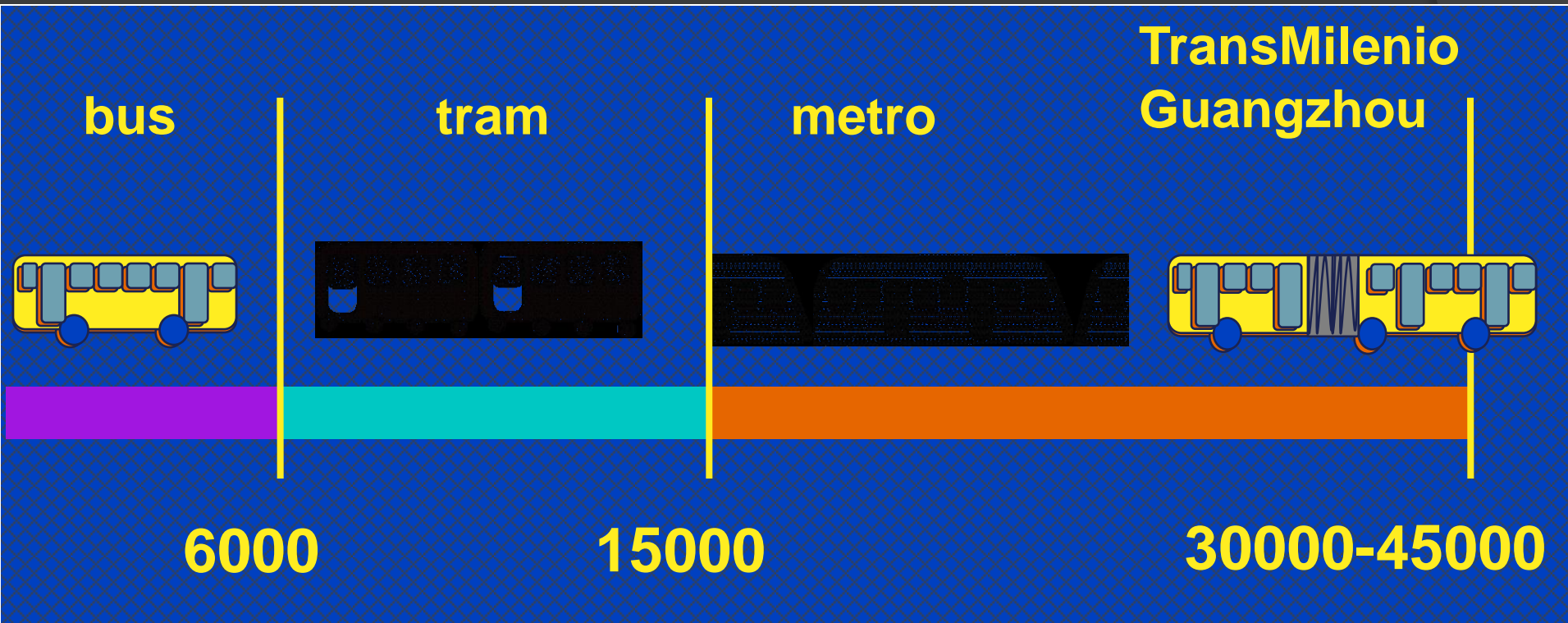


BRT: 18 - 24 months



Metros: 3 - 30 years

High capacity BRT systems in Bogota and Guangzhou now carry more than most metro systems worldwide



Passengers per hour per direction



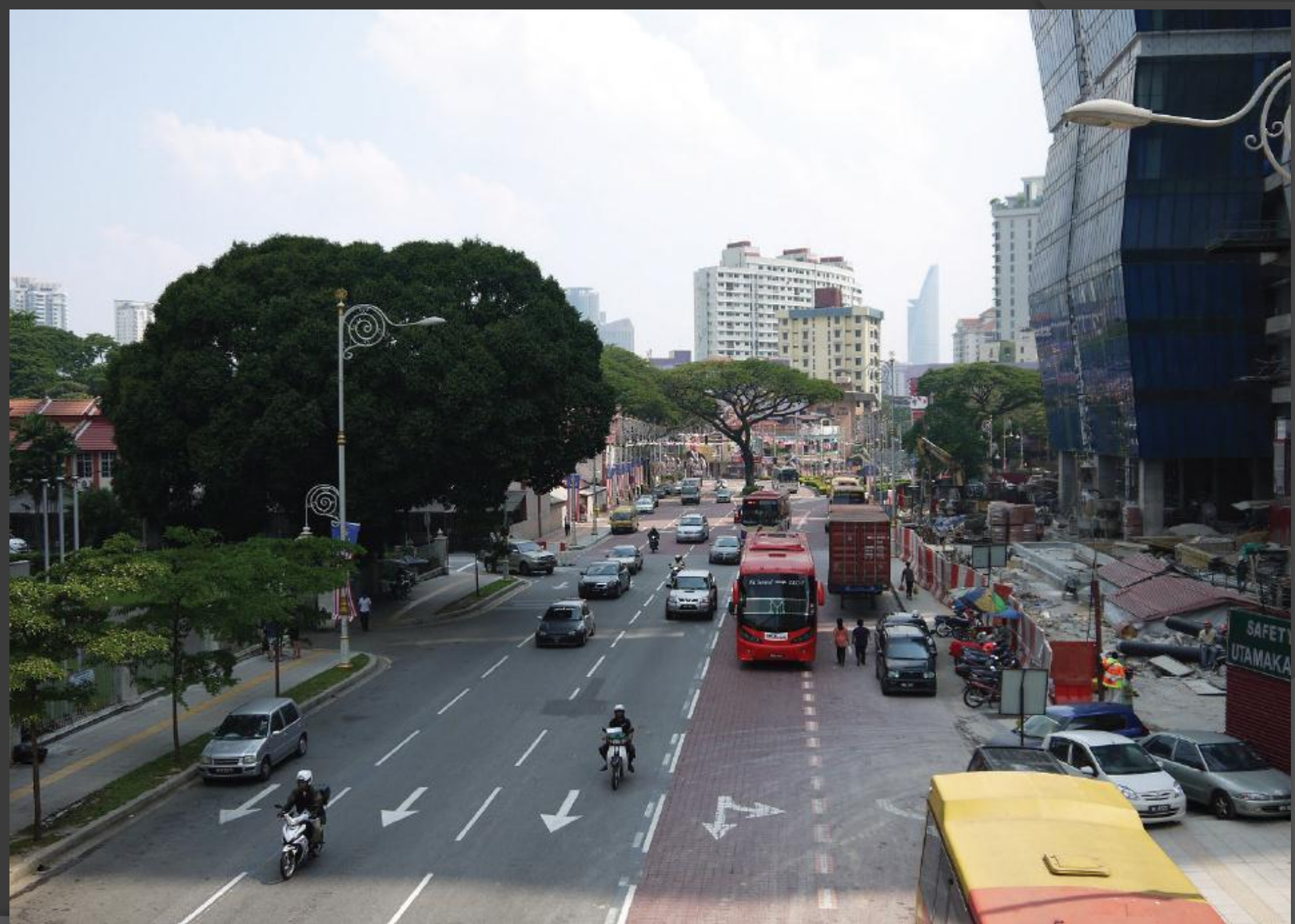
BRT in Bogota



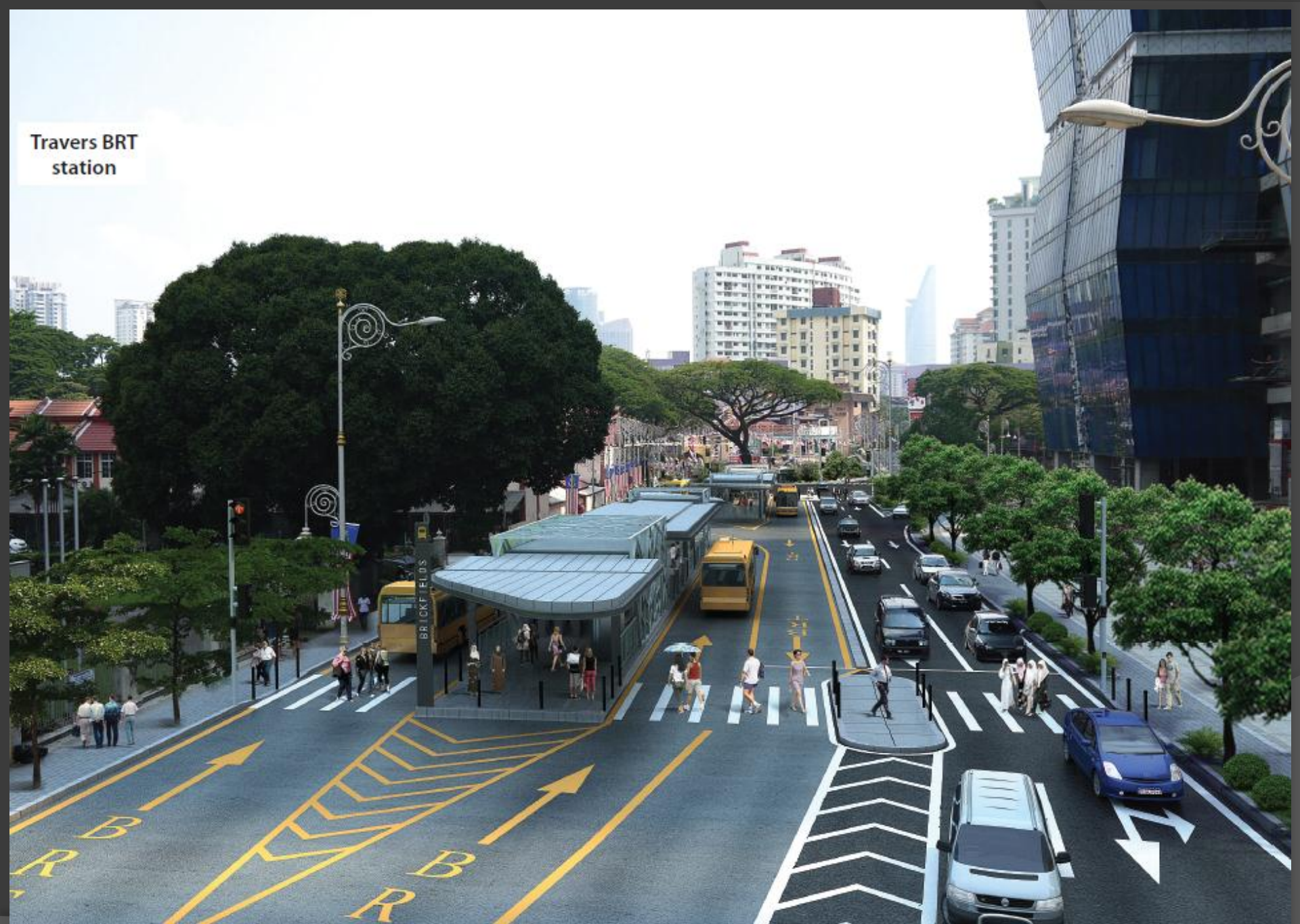
BRT in Bogota – highest throughput point in the system: only 36m wall-to-wall







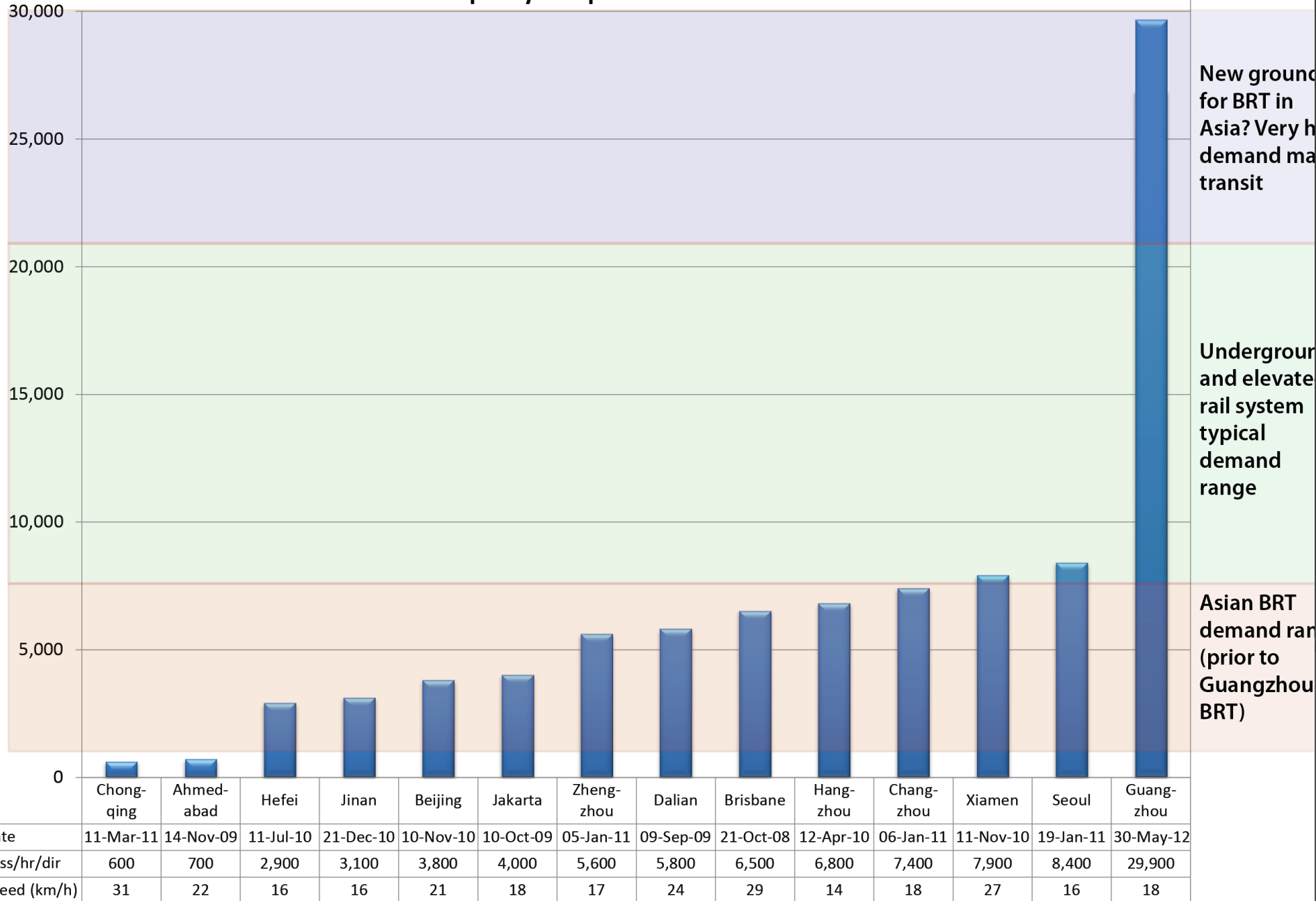
Travers BRT station







Asia BRT capacity comparison



Asian BRT systems speed and demand comparison. Note that these figures refer to actual maximum passenger demand, not theoretical maximum capacity. All figures are from ITDP field surveys.

 **BRT** 太古汇 TaiKoo Hui

安全出口
EXIT

各位乘客的乘坐，
此通道的开放时间
是 6:00 分，请您留意保
您的出行，谢谢合作！

BRT-metro-mall connection at Shipaiqiao



Before BRT, in the BRT corridor. Bus stop congestion – bad for all modes



Karl Fjellstrom, ITDP

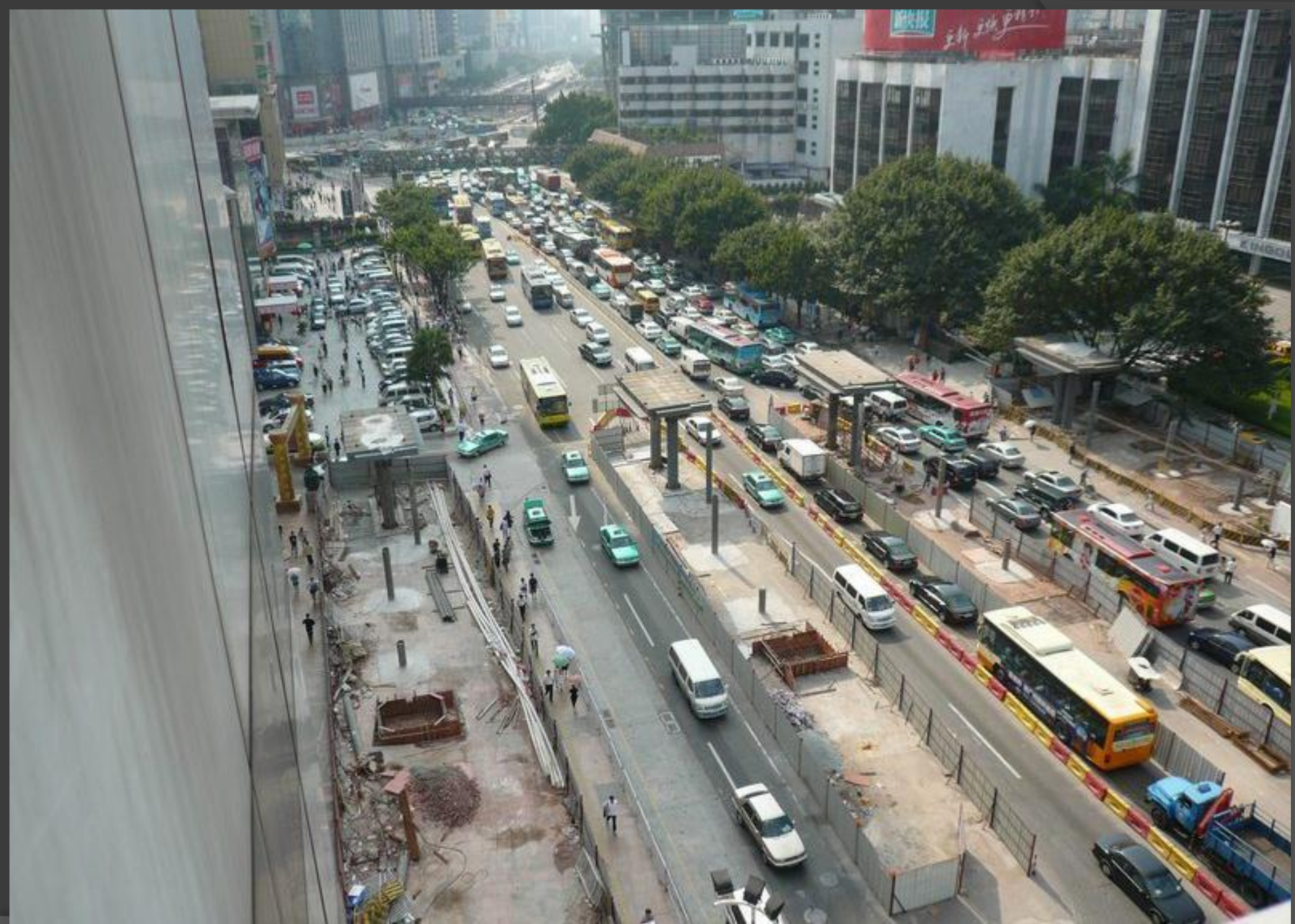
A typical scene at Gangding bus stop before the BRT implementation.



Gangding BRT station, after the BRT implementation



A typical scene at Gangding bus stop before the BRT implementation.







Tianfu Lu intersection before and after BRT



Karl Fjellstrom, itdp-china.org

New high density development lines the BRT corridor. Shipaiqiao station includes a metro connection and a connection into the adjoining shopping mall



Karl Fjellstrom, itdp.org.cn

3 substops, Gangding station.



3 substops, Tangxia station. Tangxia station has around 8,500 passenger boardings in a single hour during the morning peak. Station access is via a bridge with escalators, and a pedestrian crossing with refuge islands



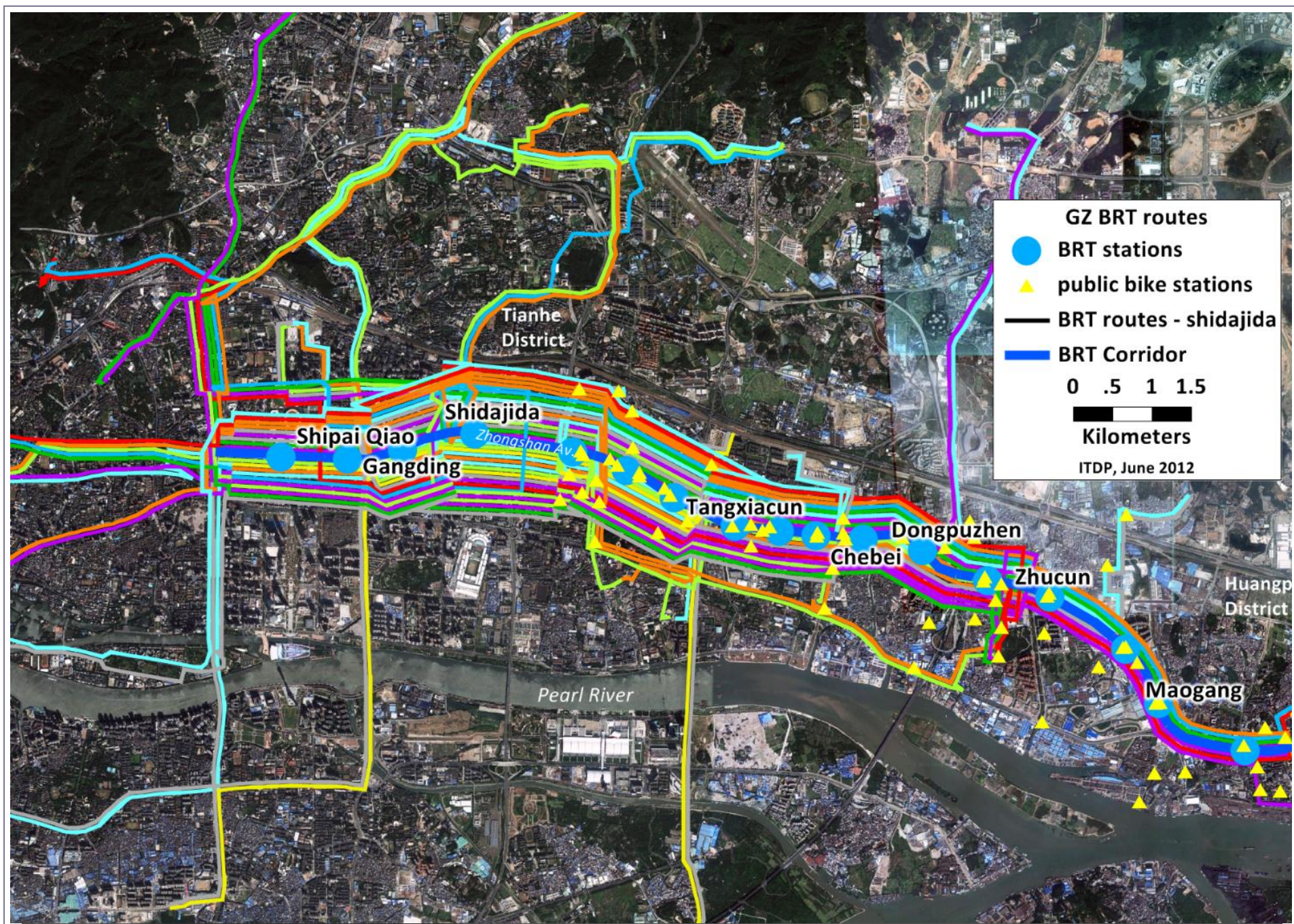
Tangxia BRT station and urban village



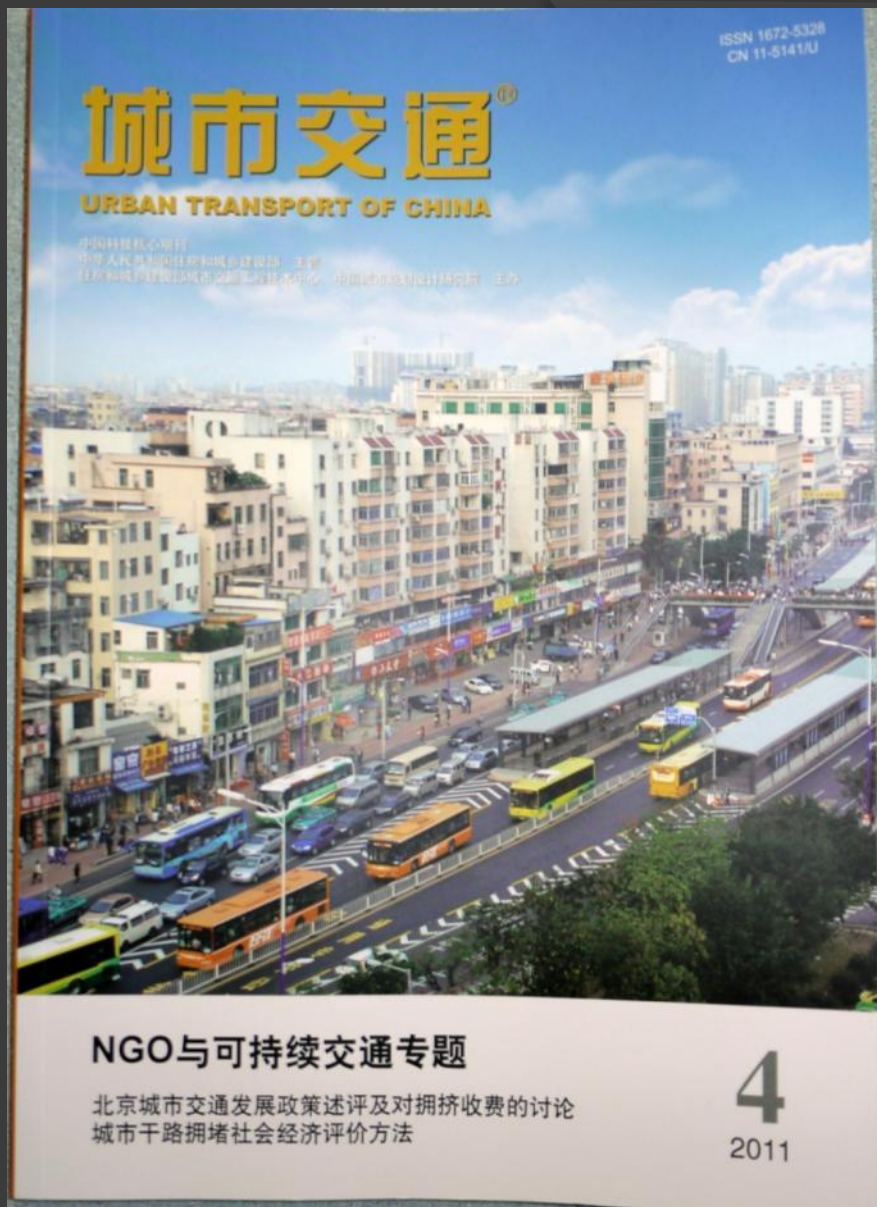
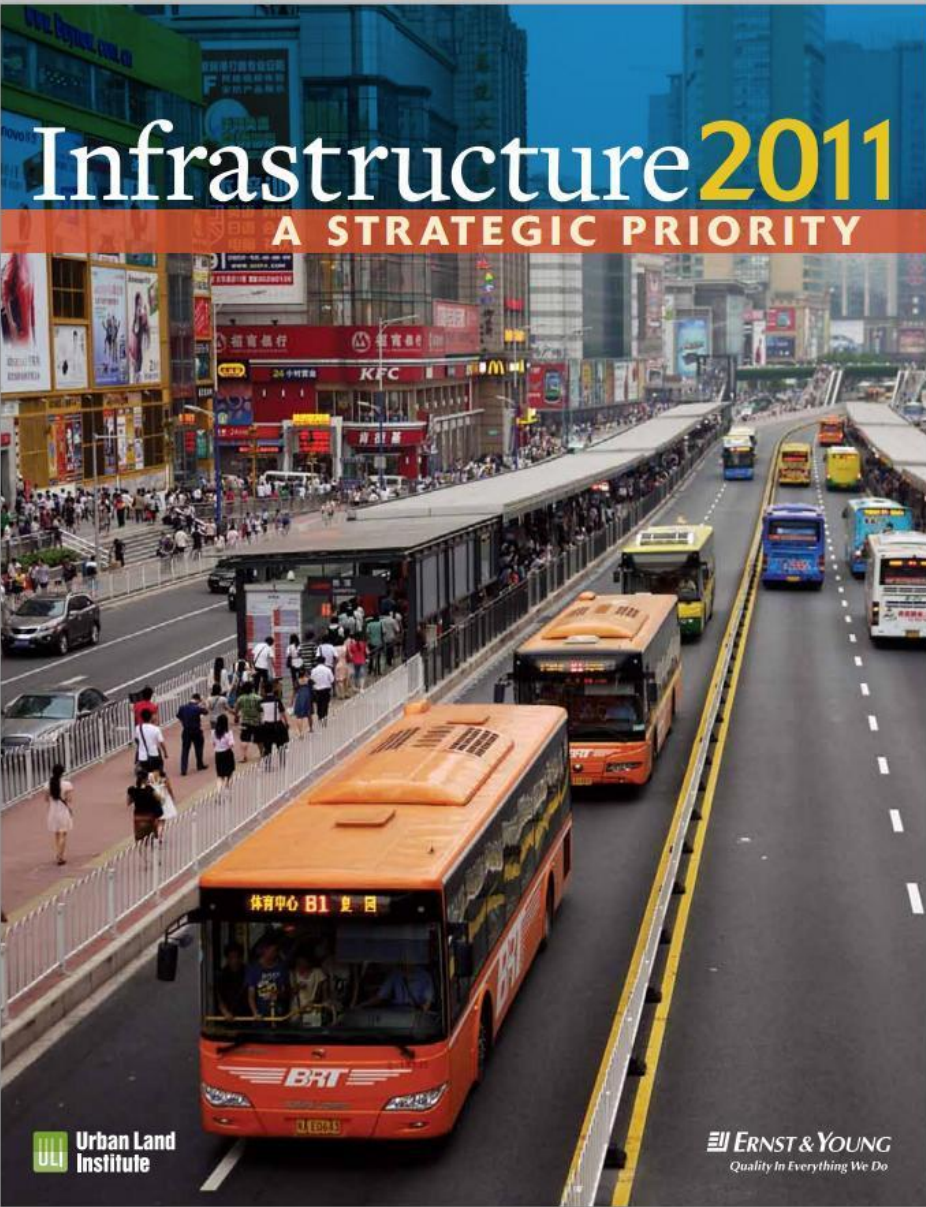
Shangshe BRT station in the morning peak. Highest demand stations include escalators



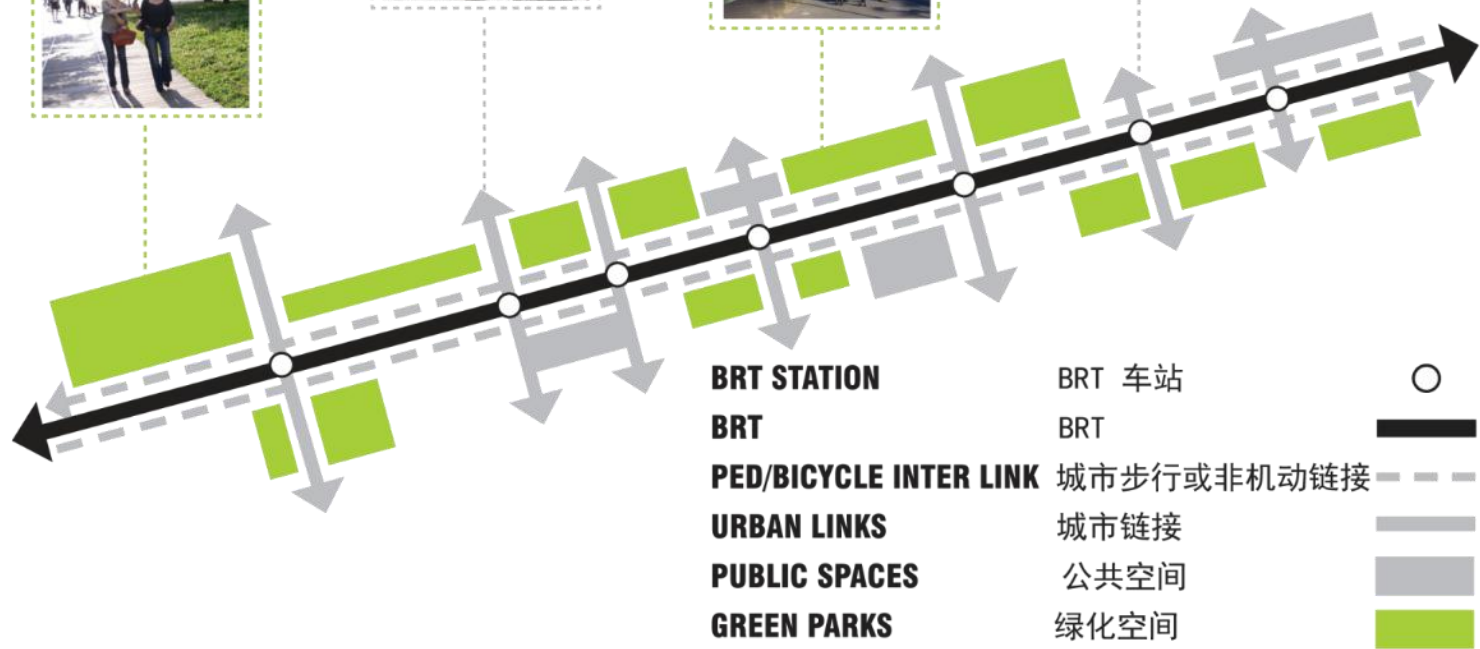
Chebei intersection – change from 4-phase (before BRT) to 2-phase (with BRT)



BRT routes at Shidajida



The Guangzhou BRT and integrated bike sharing system won the 2011 Sustainable Transport Award. It has been covered in the New York Times, featured in major reports and publications, exhibited by the Smithsonian in the lobby of the United Nations building in New York (in October-November 2011) and featured in a Smithsonian channel documentary and other media, featured on the front cover of the influential Urban Transport of China journal, and seen hundreds of visiting delegations from China and around the world.



广州BRT将成为世界级的公共空间地标

在每一个BRT站应具备有完善的城市衔接，这个衔接为行人、自行车到达毗邻地方提供一个具有宜人的，有导向性的和让人感到安全和便利的环境。

设计的绿化空间应该是吸引人的和具有多样性的公园，同时要创造能方便到达城市各个地方的链接网络。

BRT可视为城市长远发展投资的系统，它为市民提供一个以人为本的可持续发展的环境。



肯德基宅
40081882

肯德基宅
40081882

肯德基宅
40081882





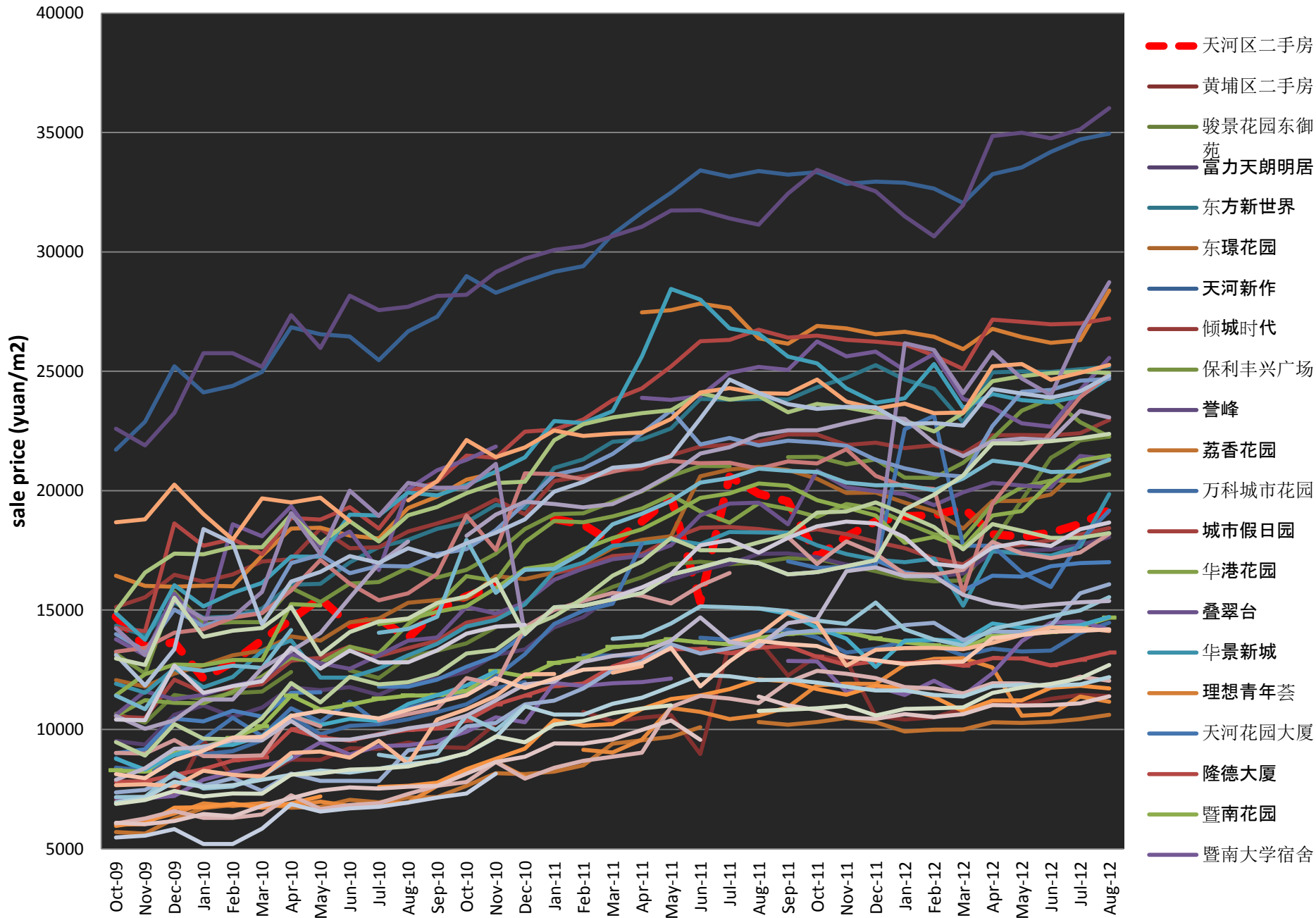
肯德基
宅急送
400-822-8222
www.kfc.com.cn
23-823

24小时营业

肯德基
宅急送
400-822-8222
www.kfc.com.cn

Sale price of pre-owned house along Zhongshan Av in Tianhe area

天河区中山东大道沿线小区二手房销售价格



3分钟即达地铁岗顶站，百步即达BRT快速公交系统站点
每一种从容姿态，都是别人仰羡的风景

The image shows the Century Avenue BRT Station, a modern transit hub with a prominent orange facade. A red construction crane is visible in the background, and a blue BRT bus is parked at the station. A red banner with white text is displayed on the station wall.

世纪大道站
CENTURY AVENUE

感谢广大市民对快速公交项目的支持

快速公交

BRT





兰州西站
LANZHOU WEST RAILWAY STATION

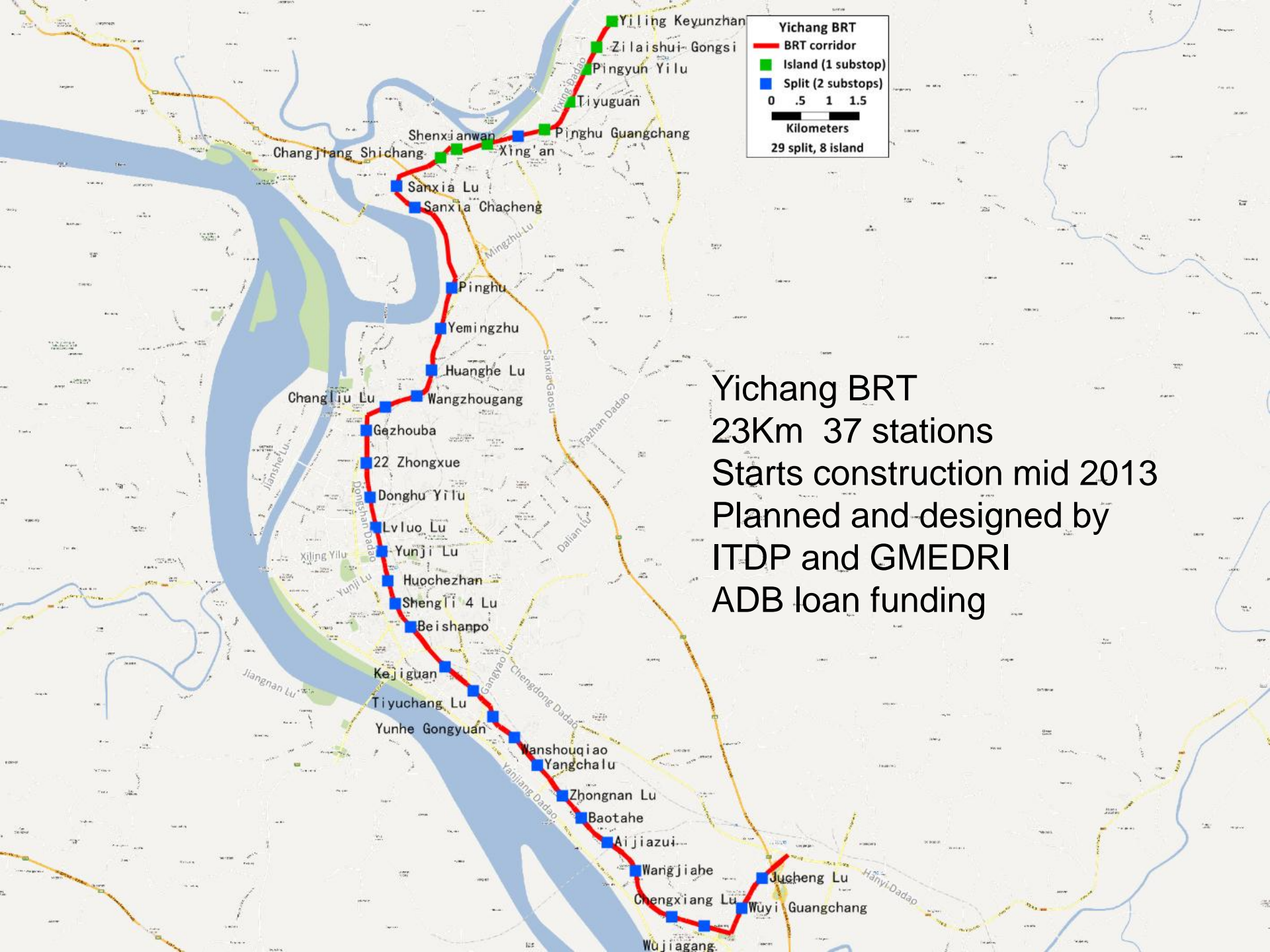
兰州西站
进站入口
Entrance



银信大厦

兰州西站





Yichang BRT

- BRT corridor
- Island (1 substop)
- Split (2 substops)

0 .5 1 1.5

Kilometers

29 split, 8 island

Yichang BRT
 23Km 37 stations
 Starts construction mid 2013
 Planned and designed by
 ITDP and GMEDRI
 ADB loan funding







中国移动通信集团
中国移动
幸福湖北 慧选移动
移动改变生活
6666666666 中国移动
超过6亿人的选择

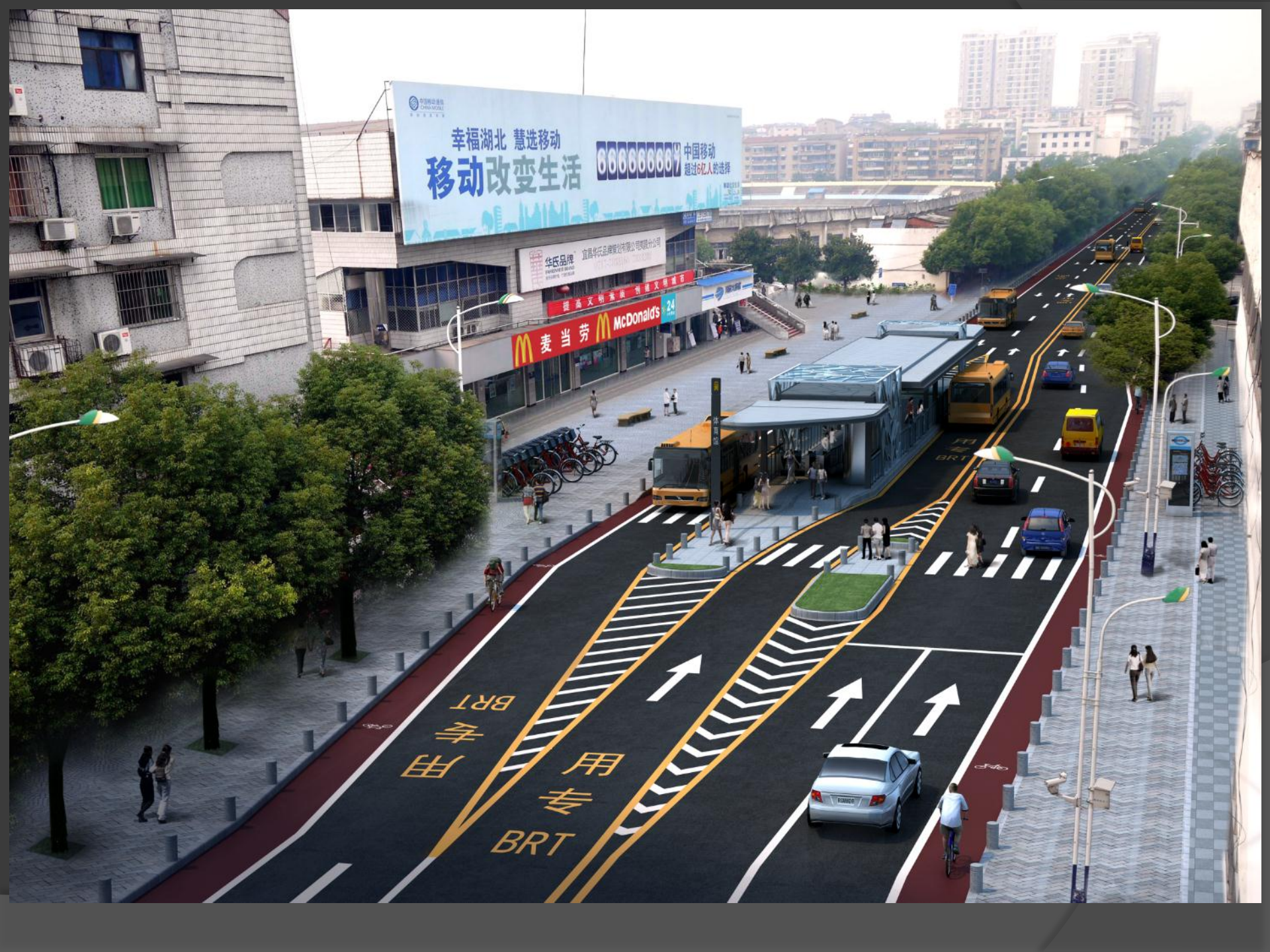
华氏品牌
宜昌华氏品牌置业有限公司
WALSH BRAND
WALSH BRAND PROPERTY DEVELOPMENT CO., LTD.

提高文明素质 创建文明城市
交通银行
BANK OF COMMUNICATIONS



危险区 避让
A blue and white triangular warning sign with a pedestrian symbol and the text '危险区 避让' (Danger Area, Yield).

宜昌区 避让
A blue and white rectangular sign with the text '宜昌区 避让' (Yichang District, Yield).





广州市现代快速公交
和可持续交通研究所

Institute for Transportation
& Development Policy



BRT as a mass transit
option



Parking maximums
instead of minimums



Greenways & bike
sharing

LONDON'S GHERKIN (SWISS RE BUILDING)



- 46,450 m² of office space
- 1400 m² of retail space
- 4000 people working in the building

LOCAL STATIONS

Liverpool Street
Bank
Cannon Street
Monument
Fenchurch Street



BUSES

12 local buses service the 30 St Mary Axe area
Download the map (pdf)

For further information:
www.journeyplanner.org

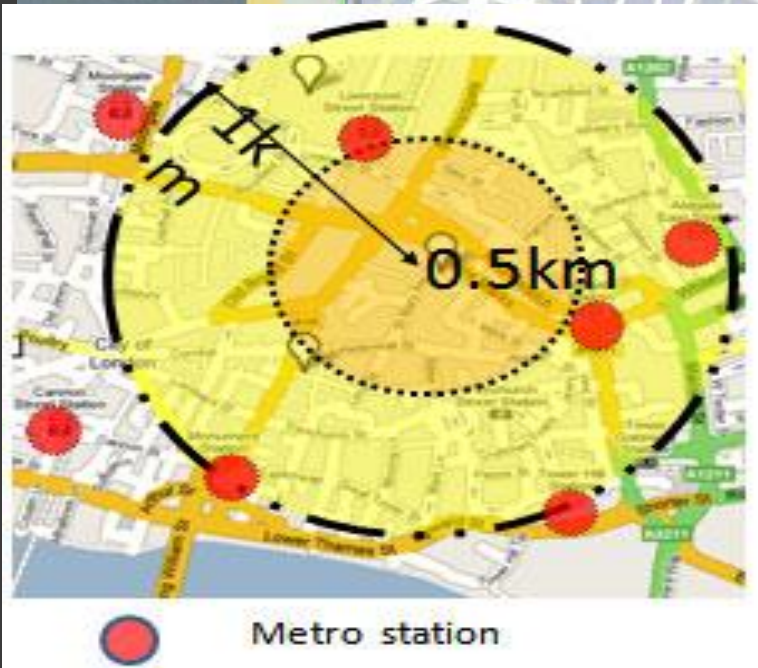
-Next to several forms of public transportation

-NO parking space for employees or visitors

-118 bicycle parking spaces

- 52 motorbike parking spaces

- 5 parking spaces for disabled





广州市现代快速公交
和可持续交通研究所

Institute for Transportation
& Development Policy



BRT as a mass transit
option



Parking maximums
instead of minimums



Greenways & bike
sharing



Lizhiwan Canal, before the upgrading



Lizhiwan Canal, 2011



Donghaochong Canal, before the greenway (2006)



Donghaochong Canal, after the greenway (2011)



Donghaochong Canal



Parks along the Donghaochong canal



Wu Wenbin, itdp-china.org

Bike sharing: 5,000 bikes at 113 stations. Contact: shanshan@itdp-china.org





ITDP-China, itdp.org.cn

Public bikes at Huajing Xincheng BRT station. The bike lane is paved with asphalt and separated by a line of trees

Thank You

More information:

- ◎ www.itdp-china.org
- ◎ www.itdp.org
- ◎ www.chinabrt.org

xiaomei@itdp-china.org