



Community, Culture & Resilience

The Sustainability of Place-based Development

Dan Abramson, Department of Urban Design and Planning
University of Washington

2070 ft

Image © 2007 DigitalGlobe

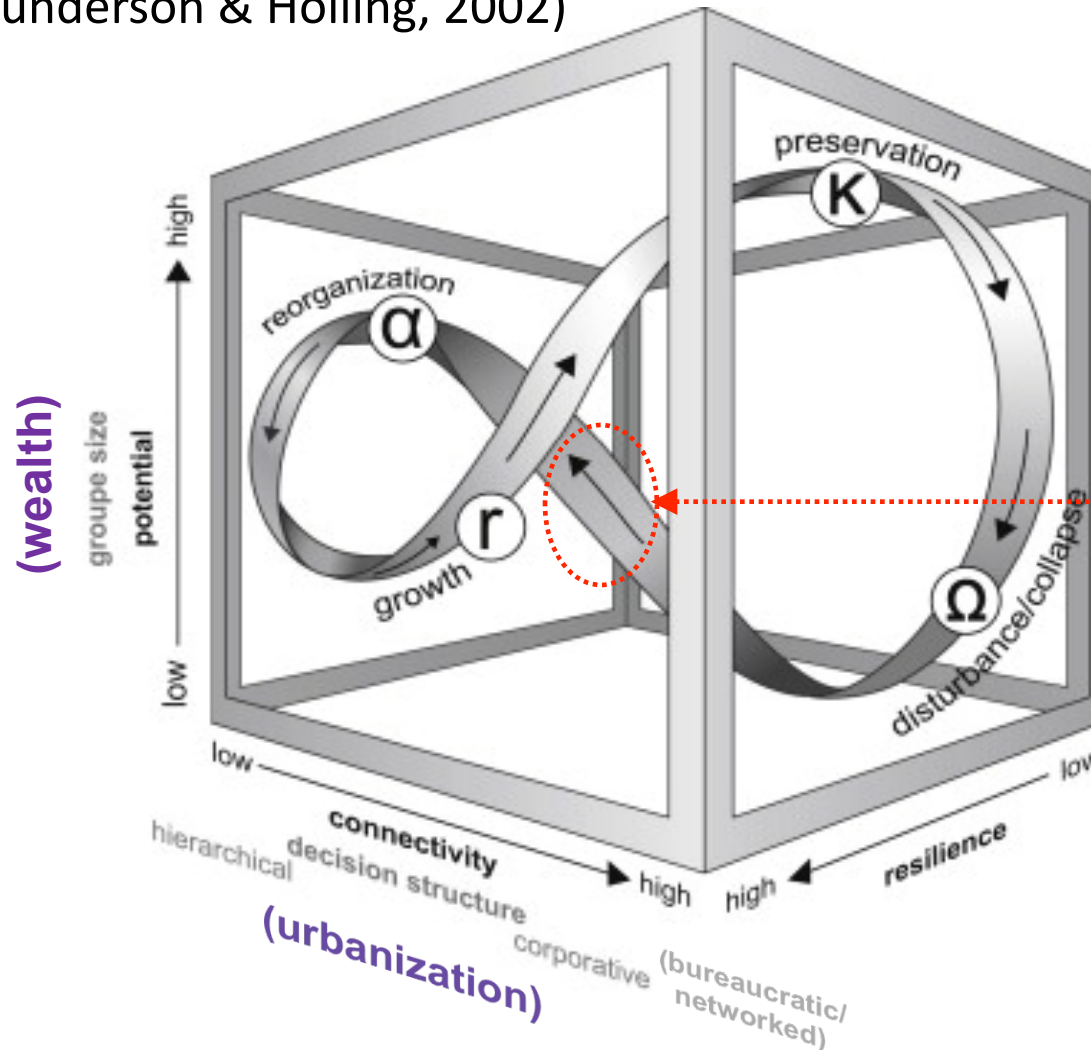


Why are Trust and Memory
crucial to resilience and
sustainability?

Memory + Trust = Feedback

Panarchy - The Adaptive Cycle

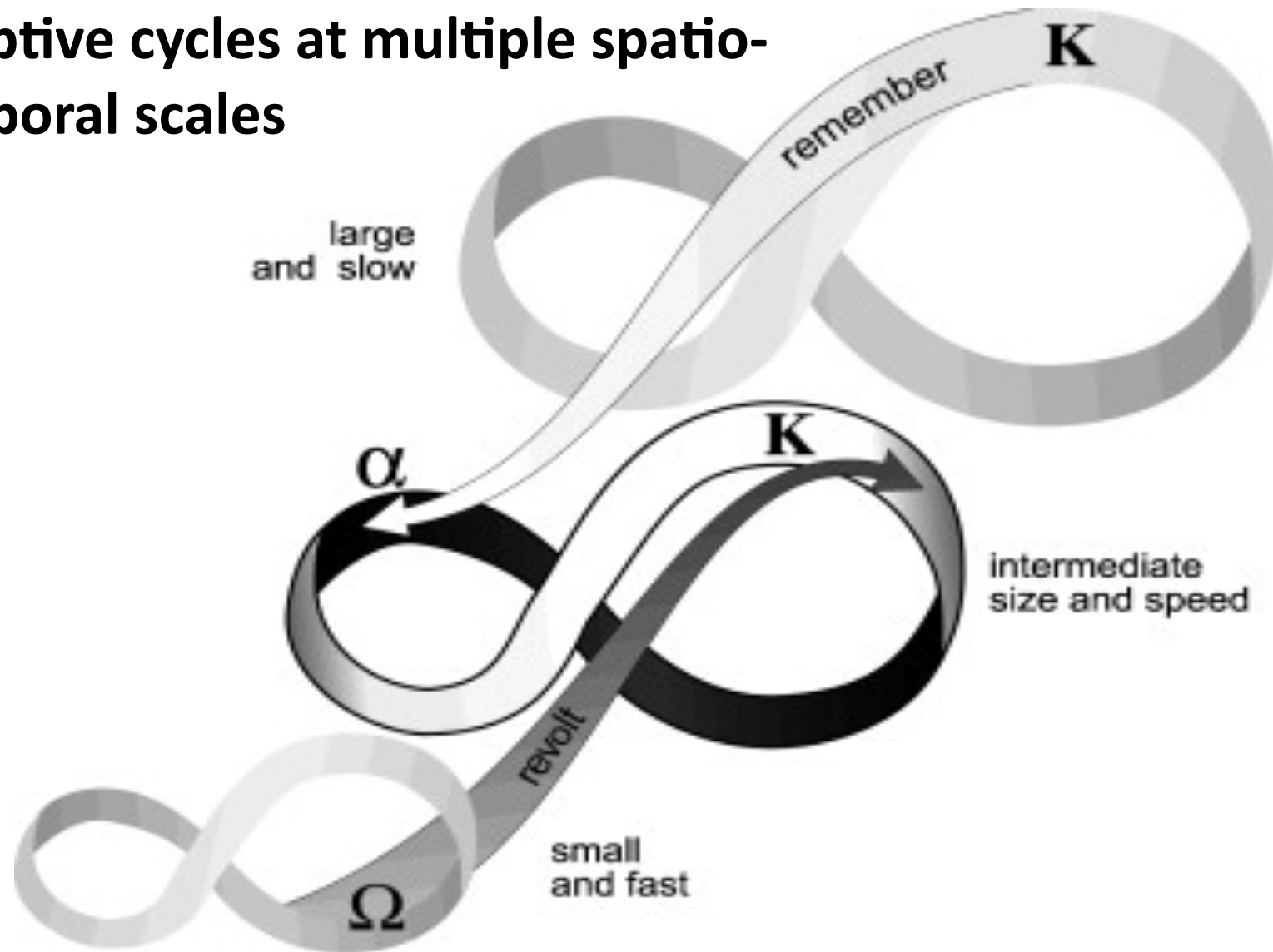
(Gunderson & Holling, 2002)



Faster, better
feedback =
more resilience

Graph of alternating adaptive cycles according to Gunderson and Holling (2002). Generalizing labels for axes in black, specifying labels for cultural cycles in grey. Group size – size of consciously cooperating groups (for one-way adaptive cycles compare [Widlok et al., 2012](#); for r-phase, K-phase, Ω -phase and α -phase see [Table 4](#)). Source: Andreas Zimmermann. **Cultural Cycles in Central Europe during the Holocene**. Quaternary International Volume 274 2012 251-258. <http://dx.doi.org/10.1016/j.quaint.2012.05.014>

Adaptive cycles at multiple spatio-temporal scales



Holling's adaptive cycle. From *Panarchy*, edited by Lance H. Gunderson and C.S. Holling (2002) Island Press. Reproduced by permission of Island Press, Washington, DC.. Cited in Gary, Jay E. **Toward a new macrohistory: An extension to Sardar's "postnormal times"**, *Futures* Volume 43, Issue 1 2011 48 – 51. <http://dx.doi.org/10.1016/j.futures.2010.04.033>

Home

Schedule

The Team

Tianzhong
Village, Fujian

Taiping
Township,
Sichuan

Background Info

University of Washington Summer 2011 Field Studio in China and Spring Quarter Prep Seminar

URBDP 598 J and URBDP 508 / ARCH 506 / LARCH 495
Instructor: Dan Abramson, abramson@uw.edu



Fujian and Sichuan Provinces

June 20 – August 6



Discover the inherently resilient qualities of traditional villages in China. Assist two villages in China to develop practical uses and designs for preservation and adaptation of vernacular buildings and cultural landscapes facing neglect in the process of migration and urbanization in Chinese society as a whole.



[Home](#)

[What We Do](#)

[Who We Are](#)

[Get Involved](#)

[Marketplace](#)

[Blog](#)

[Contact Us](#)

[Donate](#)

A scenic photograph of a mountain range in Liangshan, China. The foreground shows a steep, rocky mountain slope covered in green vegetation. In the distance, more mountains are visible under a cloudy sky with soft light filtering through. A small village is nestled in the valley between the mountains.

Cool Mountain Education Fund

To support education for community sustainability in Nuosu Yi communities, order our 2013 CMEF calendar.

Education for community sustainability in Liangshan, China.

China-U.S. Regional Sustainable Development 中美城乡可持续发展专业研讨会

An activity of the UW Center for
Asian Urbanism in the UW College
of Built Environments 华盛顿大学建
成环境学院亚洲城市研究中心项目



About 有关研讨会 Program 研讨会内容 Registration 报名/注册 Location 地点 Underwriting 赞助 Contact 联系方式

2012 Workshop 研讨会: October 10 – 13 (10月10日 – 10月13日)

On the University of Washington campus in Seattle, USA 美国华盛顿大学, 西雅图市.

Urban development in China and the US presents many similar challenges in meeting the economic, environmental and social needs of present and future generations. The China-US Professional Workshop on Regional Sustainable Development brings together Chinese and American leaders and professionals in municipal government, planning, development, and design for an intensive exchange.

中国和美国的城市发展,在为满足当前及未来的经济、环境和社会需求上面临着许多相似且比世界其他国家都更大的挑战。中美区域性可持续发展研讨会将中国和美国地方政府的领导,规划、发展和设计方面的专家汇集于一堂进行深入研讨。

Workshop Brochure 研讨会
信息海报 (PDF)

[English](#) | [中文](#)



China's Urban Transition

2011



2035



POPULATION **656** MILLION

690 MILLION

+350

ANNUAL INCOME: **6,977** YUAN
(cash income)

21,810 YUAN
(disposable income)

MILLION

<http://www.bloomberg.com/news/2012-01-17/china-urban-population-exceeds-rural.html>

Tianjin Eco-city. Source: <http://green.blogs.nytimes.com/2013/02/13/steep-challenges-for-a-chinese-eco-city/>

Eco-city Models

**Scheme for Dongtan Eco-City,
Chongming Island, Shanghai**
Source: Internet media



DaFen, Shenzhen



Quanzhou, Fujian: Co-evolution of planned urban development with grassroots re-investment in traditional community temples

- 1994



Quanzhou, Fujian: Co-evolution of planned urban development with grassroots re-investment in traditional community temples

- 1994
- 1997



Quanzhou, Fujian: Co-evolution of planned urban development with grassroots re-investment in traditional community temples

- 1994
- 1997
- 2000



Quanzhou, Fujian: Co-evolution of planned urban development with grassroots re-investment in traditional community temples

- 1994
- 1997
- 2000
- 2005



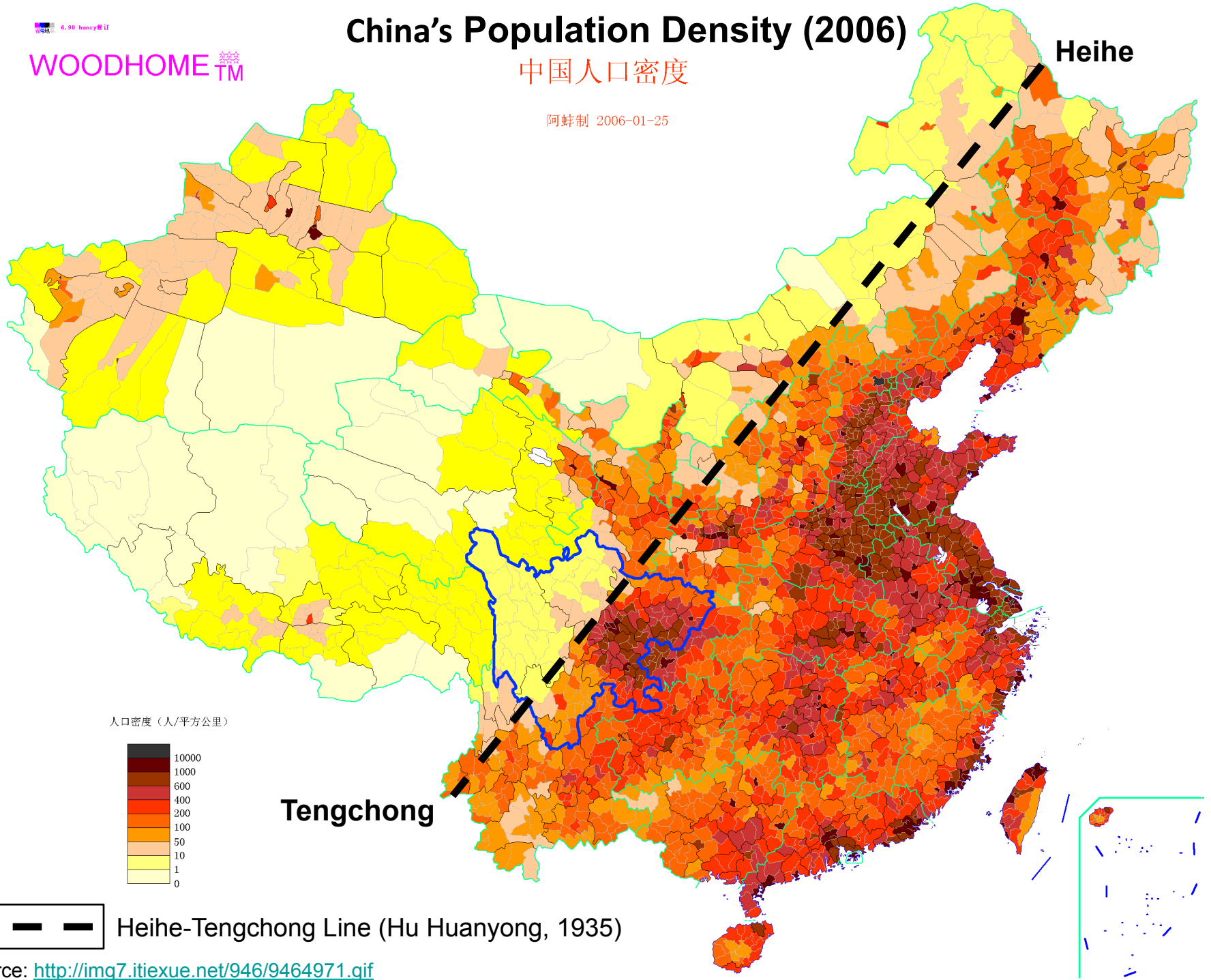
6.90 修正

WOODHOME 

China's Population Density (2006)

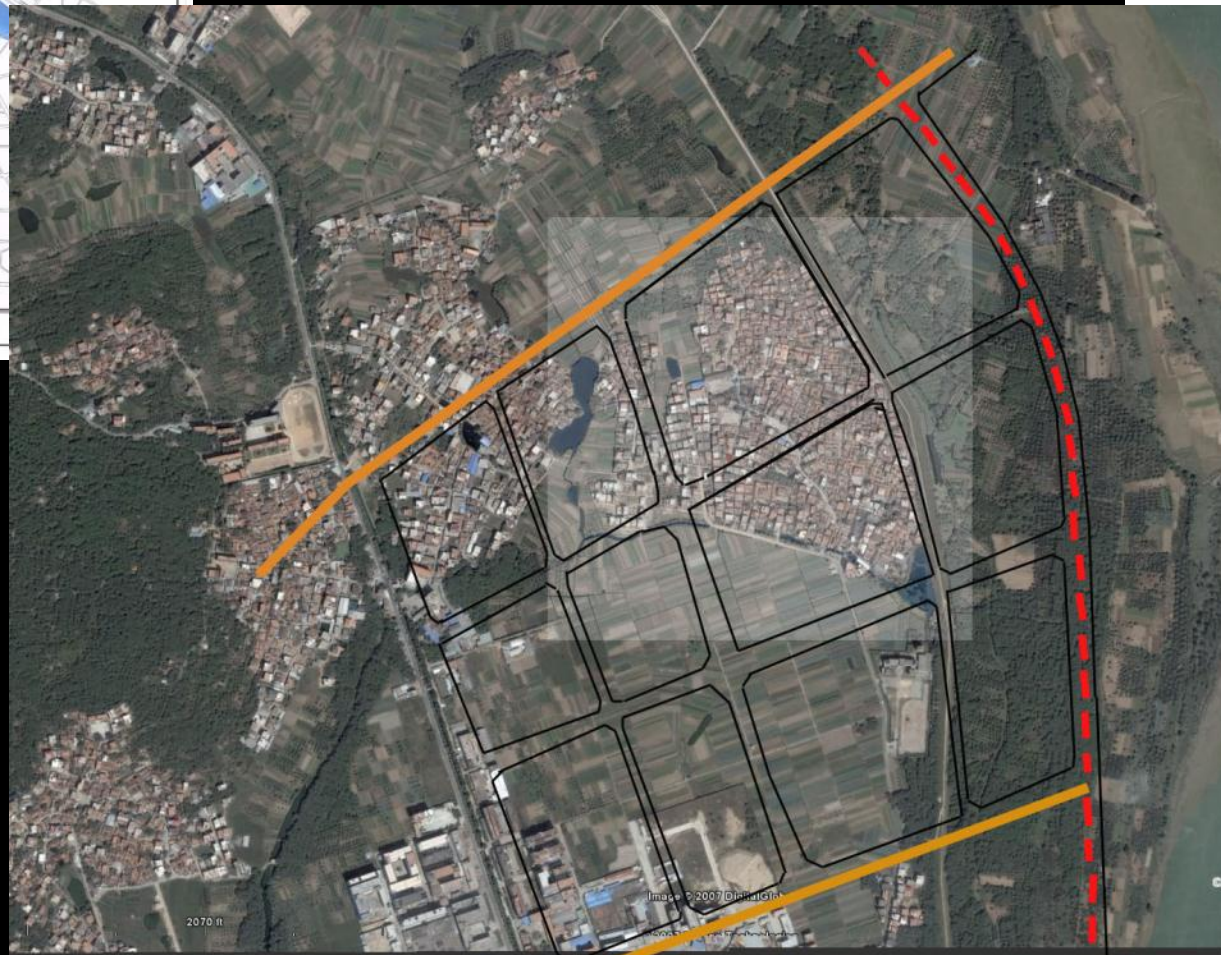
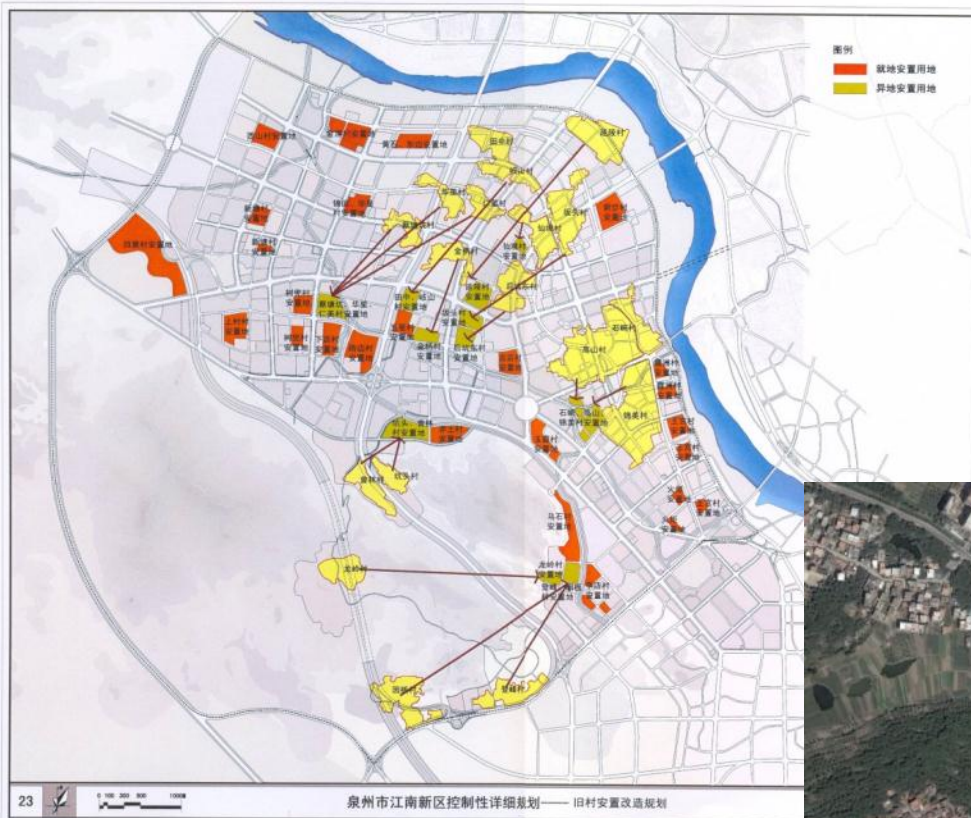
中国人口密度

阿蚌制 2006-01-25



Source: <http://img7.itiexue.net/946/9464971.gif>

Village relocation and demolition



Socialist New Countryside Construction



Taoping, Li County - alluvial river terrace village

Pre-2007



Taoping, October 2010





中新网
chinanews.com



Source: <http://shifu.people.com.cn/wp-content/uploads/2011/09/都江堰.jpg>

Dujiangyan

- the source of surplus in the Chengdu Plain
- the integration of sustainable technology and local cultural practice

Traditional *Linpan* Landscape of the Chengdu Plain

A uniquely dense-but-dispersed regional settlement pattern



Environmental and Culture Restoration



安龙可持续发展示范社区示意图

The Schema of Anlong's Sustainable Development Demonstration Community



此图非实际图例
Not to scale

© 成都城市河流研究会
© Chengdu Urban Rivers Association

WildGrass Culture: An Urban Agricultural Movement in Chengdu

-- building Community & Trust



CHINA VILLAGE STUDIO

Vernacular Architecture / Community Development /
Cultural Landscape Preservation / Hazard Mitigation

Shanghai

Chengdu, Sichuan Province

June 26 – July 23

CASE STUDY

Village Re-development in the Chengdu Plain

